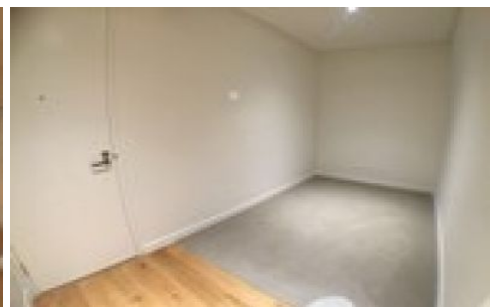
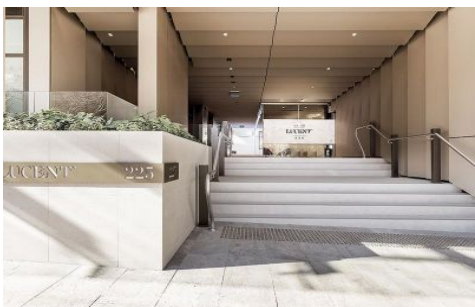


ACCESSHOME



119/225-235 Pacific Highway North Sydney NSW

1  1  1 

Don't miss out this luxury apartment, located in the central area of North Sydney. It is only minutes walk to the cafes, restaurants and station. You can easily drive car or take public transport to the CBD area. You can have access to the swimming pool, GYM and multi-function room at the top level.

- One bedroom plus a large study area
- Cleverly configured interiors maximise space
- Superb East facing views, lift access
- Engineered timber floors, carpet in bedroom
- Full height floor to ceiling glass windows
- Reverse cycle ducted air conditioning
- Stone bench tops and polyurethane cabinetry
- Mirrored splashbacks and European appliances
- Internal laundry, storage cage and NBN wiring
- Rooftop gardens and infinity pool with panoramic harbour

Price : Deposit Taken

View : <https://www.accesshome.com.au/lease/nsw/north-shore-lower/north-sydney/residential/apartment/5882600>



Nathan Zhang
0426159595

<https://www.accesshome.com.au>