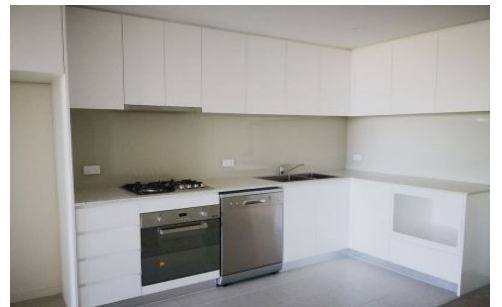
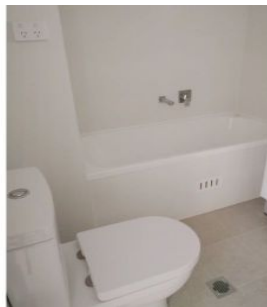


ACCESSHOME



345/22-30 Station Road Auburn NSW

1 1 1

Good quality 1 bedroom 1 bathroom 1 car space apartment located at the heart of Auburn. Close to Auburn Hospital, Olympic Park, Rhodes Shopping Centre (IKEA) and DFO Homebush

View : <https://www.accesshome.com.au/lease/nsw/parra-matta/auburn/residential/apartment/5882609>

Features include:

- Facing quiet street
- Generous sized bedroom with built in wardrobe
- Modern designed kitchen with quality appliances
- Internal laundry with dryer
- Ducted Air conditioning
- Secure parking with intercom access
- Auburn Station 400 m



Andrew Wu
0452616882



Riki Li
02 8068 5082