



**2/269 Victoria Ave Chatswood NSW**

2 2 2

This stunning apartment is situated in a recently completed low-rise boutique complex.

With predominantly Northerly aspect living areas, with eastern and western windows, and at the rear of the complex, the space is sensationally quiet and sunny.

Designed and constructed to the highest standards, the apartment boasts:

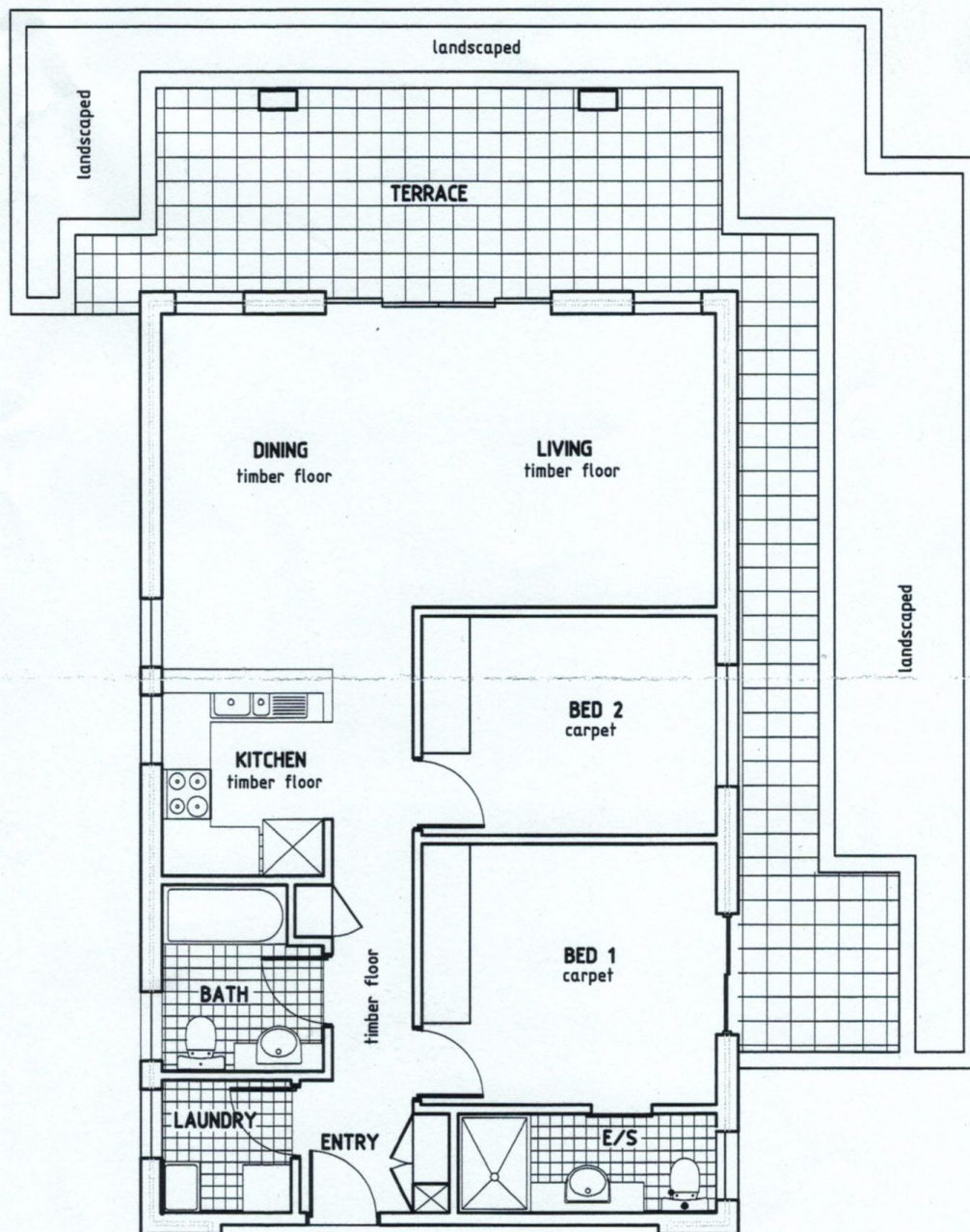
- ? Oversize open plan lounge/dining opening to a large wraparound balcony
- ? Open plan contemporary kitchen with gas cooking
- ? Both bedrooms with built-in robes, main with ensuite
- ? Spacious & sparkling fully tiled main bathroom
- ? Entrance hall, internal laundry, linen cupboard
- ? Triple aspects for abundant natural light
- ? No common walls, cable TV facilitated, security wired
- ? Security building/parking, separate secure storage.

**Price** : \$ 1,008,000  
**Building Size** : 139 sqm  
**Land Size** : 170 sqm  
**View** : <https://www.accesshome.com.au/sale/nsw/north-shore-lower/chatswood/residential/apartment/5882679>



**Olivia Lee**  
**0402493698**





This floorplan is indicative only. It has been supplied by a third party and its accuracy has not been verified. All dimensions are approximate and the layout is suggestive only. No liability for inaccuracy will be accepted and purchasers must rely on their own inspections and enquiries.