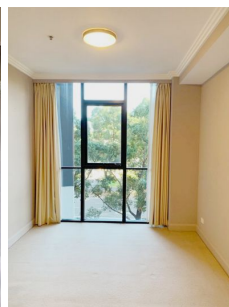


ACCESSHOME



201/9 Australia Avenue Sydney Olympic Park NSW

2  2  1 

Morden 2 bedrooms apartment, 2-3 min walking to the train station, 1 min walking to bus stop and very close to restaurants, cafe, and shops.

View : <https://www.accesshome.com.au/lease/nsw/inner-west/sydney-olympic-park/residential/apartment/5882712>

The apartment includes:

- ? Stylish open-plan interiors
- ? Master suite complete with ensuite
- ? Spacious living areas
- ? Sleek designer kitchens and bathrooms
- ? Stone benchtops and quality stainless steel appliances
- ? Built in wardrobes and storage
- ? Split system air conditioning
- ? Parking



Nathan Zhang
0426159595