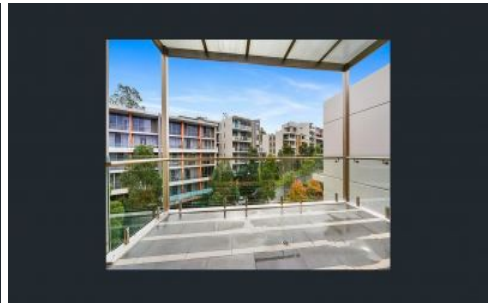
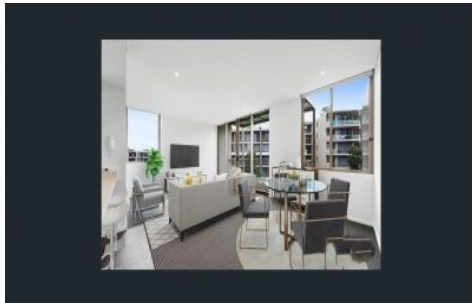


ACCESSHOME



502/14 Epping Park Drive Epping NSW

2  2  1 

Immaculately presented and well maintained, this large 2 bedroom apartment with contemporary interior design, large living & dining area, study/media area offers you space, lifestyle and all conveniences. Enjoy first class facilities, with the convenience of the Epping Park location.

View : <https://www.accesshome.com.au/lease/nsw/north-ern-suburbs/epping/residential/apartment/7325347>

APARTMENT FEATURES

- 2 generous bedrooms with built-in robes
- A modern, open plan layout with free-flowing living areas
- Kitchen with stone bench tops and European appliances
- Internal laundry with dryer
- air-conditioning system
- Security intercom system and secure building access



Riki Li
02 8068 5082