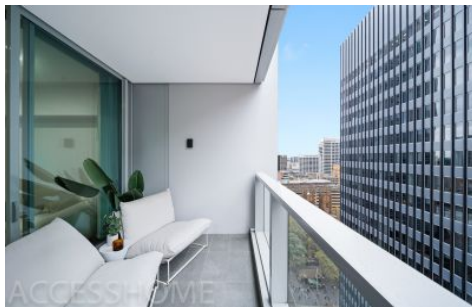


ACCESSHOME



1812/115-119 Bathurst Street Sydney NSW

1 🏠 1 🚗

Greenland Centre, set to be the tallest residential tower in the Sydney CBD, is to reach new level of uncompromising luxury finish with the ultra convenient location. This north facing one bedroom plus extra study apartment is perched on level 18.

View : <https://www.accesshome.com.au/sale/nsw/sydney-city/sydney/residential/apartment/7554957>

What matters to you:

- Prime location with ultra convenience to everywhere in the Sydney CBD;
- North aspect living and bedroom;
- Luxury internal finish with quality timber flooring in the living room and stainless steel kitchen appliances;
- Bathroom featuring frameless glass showers and designer lighting;
- Internal laundry with dryer;
- Air conditioning;
- Security entrance with lift access;



Olivia Lee
0498228899



1812/ 115-119 Bathurst Street, Sydney

All of the information in this document has been provided by third parties who we believe are reliable and have given the information in good faith. However, we have not verified the information and cannot guarantee its accuracy. All interested persons should rely on their own enquiries and ensure that the information is suitable for their individual circumstances.

ACCESSHOME 1300 885 810