

ACCESSHOME



524/68 River Road Ermington NSW

2  2  1 

* Open inspection Saturday or by appointment
In this incredibly peaceful property, where sleek modern style integrates well with the peaceful seclusion of nature, find your haven. This home is comfortable and spacious with a living area that easily opens up into a sunny winter garden. This home's serene green views can be seen in every area, striking the ideal mix of modern elegance and quiet surroundings.

- Large living area with dedicated living and dining spaces
- Versatile winter garden able to be used as a peaceful outdoor space, or living room extension
- Excellent privacy with leafy outlook
- Oversized kitchen with freestanding island bench and gas cooking

Type : Apartment
Price : Under Contract
View : <https://www.accesshome.com.au/sale/nsw/parra-matta/ermington/residential/apartment/8056035>



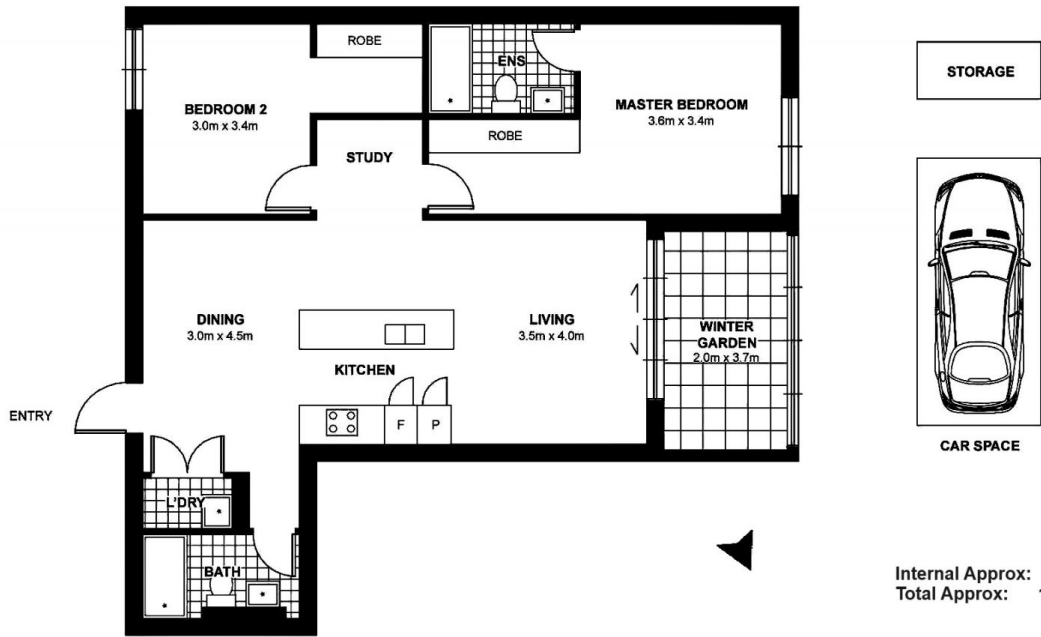
Olivia Lee
0498228899



Jimmy Chan
0420611183

[For full version visit the website](https://www.accesshome.com.au)

<https://www.accesshome.com.au>



Disclaimer: Floor plans and site plans are intended as guide and are not part of any legal documents or title and are subjects to errors, omissions, and inaccuracies and should not be used as a reference. Dimensions are approximate only. Interested parties should make their own enquiries.